



JOB NAME:	CONTRACTOR:
JOB LOCATION:	APPROVAL:
ENGINEER:	CONTRACTOR P.O.:
APPROVAL:	REPRESENTATIVE:

FPE-8E086

776032 3-WAY WAFER STYLE, BRACKET MOUNTED, CARBON STEEL DIVERTING BALL VALVE, "L" PORT, TWO SEATS, ANSI CLASS 150, REDUCED BORE WITH FPE ELECTRIC ACTUATOR

SIZES 1/2" TO 6"

*001 12V AC/DC *002 24V AC/DC *003 100-240V AC
 01 BATTERY BACKUP *02* POSITIONER *04* BATTERY BACKUP W POSITIONER

ACTUATOR FEATURES

- NEMA 4, 4X Housing
- CSA, UL approved
- 12V/24V AC/DC and 100-240V AC Models Available
- ISO 5211 dual patterns
- VB015 -12/24V AC - 50% Duty Cycle
- VB030-VB060 - 12/24V DC and 100-240V AC - 75% Duty Cycle
- High-Strength, Impact Resistant IP67 Technopolymer Housing
- Temperature Range -4°F to 131°F
- PG11 Electrical Connection/Optional 1/2" conduit connection

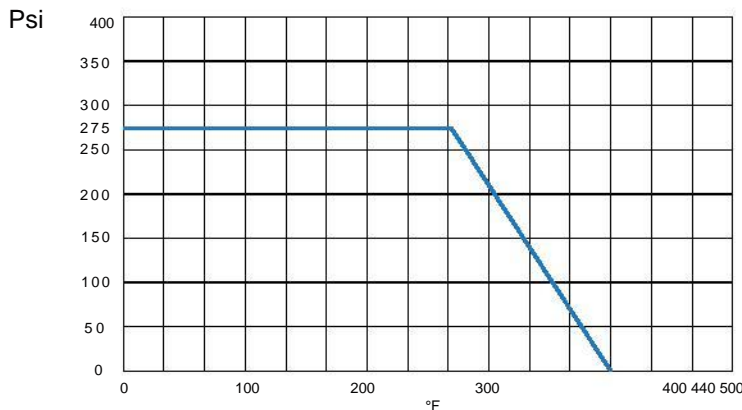
VALVE FEATURES

- ANSI Class 150, 3-way Diverter L port
- Compact design
- 776032 - Carbon Steel
- 776018 - Stainless Steel
- Sizes 1/2" to 6"
- Temperature range -4° F to 366° F.
- Blow out proof stem.
- R.P.T.F.E. seats, packing and thrust washer.
- 100% tested.
- TUV T.A. Luft approved.
- ISO 5211 mounting pad with double "D" stem

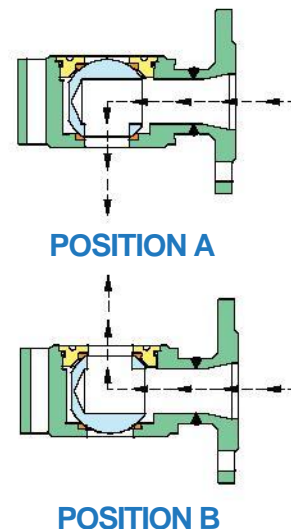
The FPE 8E086 series electric actuated package features a short profile, carbon steel, ANSI 150 Class 3-way L port ball valve. The 8E086 electric package has a stainless-steel version of the same.

The FPE electric VB series actuator is standardly furnished with dual voltages, two extra limit switches, torque limiter, extended manual over-ride, 75% duty cycle motor, in a IP 67, NEMA 4, 4X technopolymer housing

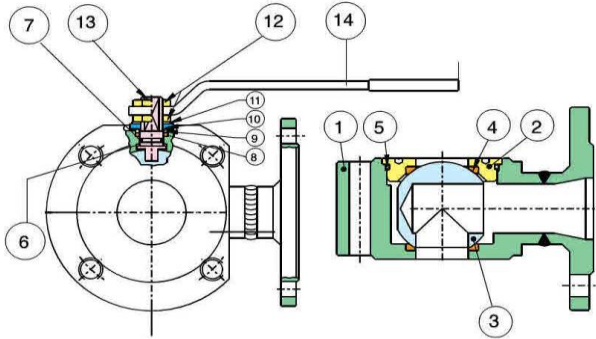
PRESSURE - TEMPERATURE CHART FOR SERIES 776018/776032



FLOW PATH



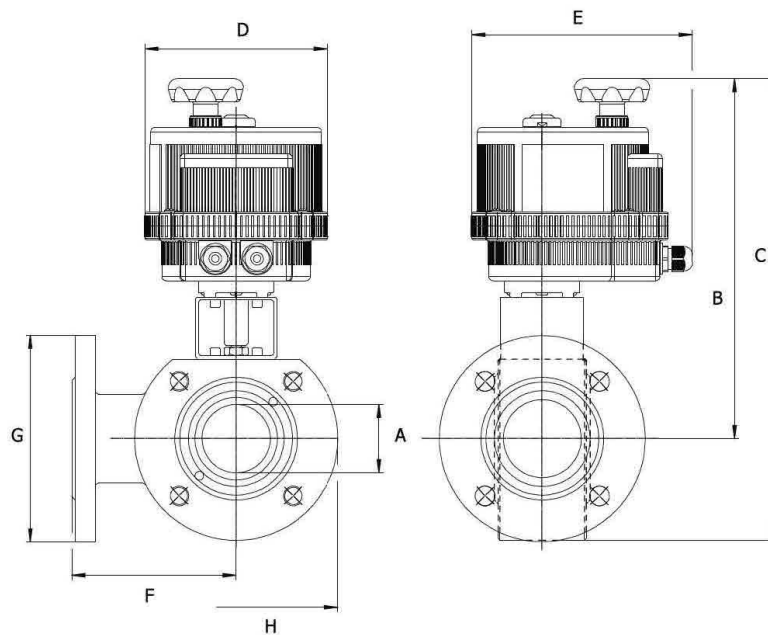
BILL OF MATERIALS



N POS	PART NAME	MATERIAL	N PCS
1	BODY	ASTM A105 / AISI 316	1
2	END CONNECTION	ASTM A105 / AISI 316	1
3	BALL	AISI 304 / AISI 316	1
4	BALL SEAT	R.P.T.F.E.	2
5	O-RING	FKM (Viton®)	1
6	THRUST WASHER	P.T.F.E.	1
7	O-RING	FKM (Viton®)	1

N POS	PART NAME	MATERIAL	N PCS
8	STEM SEAL	P.T.F.E.	1
9	PACKING GLAND	STEEL	1
10	END STOP	STEEL (1/2" - 2")	2
		STEEL (2-1/2" - 4")	2
11	SPRING WASHER	STEEL	2
12	NUT	STEEL	2
13	STEM	AISI 304 / AISI 316	1
14	HANDLE	STEEL	1

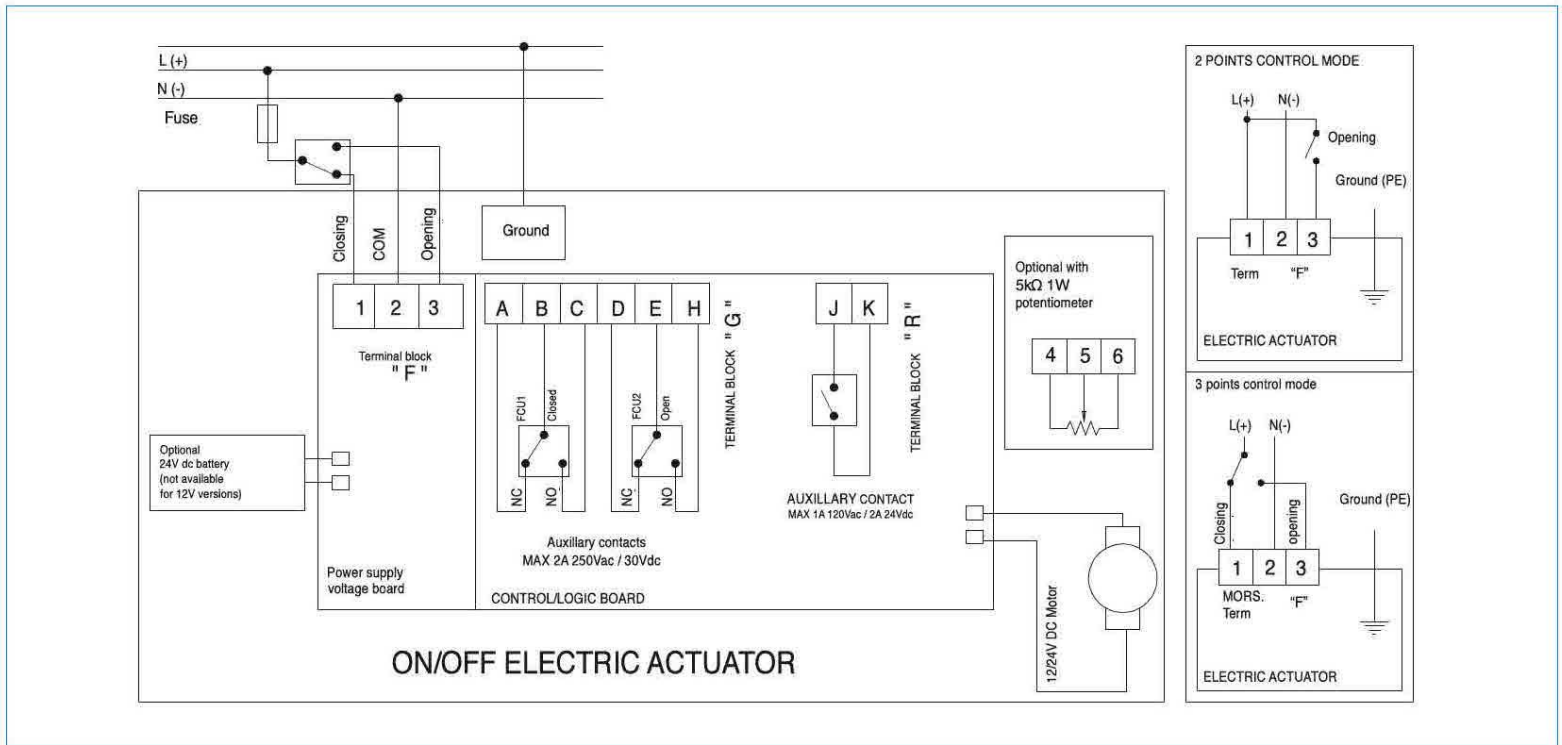
DIMENSIONS



Size	A	B	C	D	E	F	G	H	Act.
1/2"	0.39	10.50	8.82	4.84	6.46	2.99	3.54	3.54	VB015
3/4"	0.59	10.90	8.98	4.84	6.46	3.23	3.94	3.94	VB015
1"	0.78	13.10	10.90	6.18	7.52	3.39	4.33	4.33	VB030
1-1/4"	0.98	13.60	11.30	6.18	7.52	3.94	4.72	4.72	VB030
1-1/2"	1.26	15.50	12.90	7.28	8.47	4.13	5.12	5.12	VB060
2"	1.57	16.10	13.10	7.28	8.47	4.53	5.91	5.91	VB060
2-1/2"	1.97	18.00	14.50	8.31	9.33	4.92	7.09	7.09	VB110
3"	2.50	18.50	14.80	8.31	9.33	5.91	7.48	7.48	VB110
4"	2.99	20.80	16.30	8.31	9.33	6.26	9.06	9.06	VB190

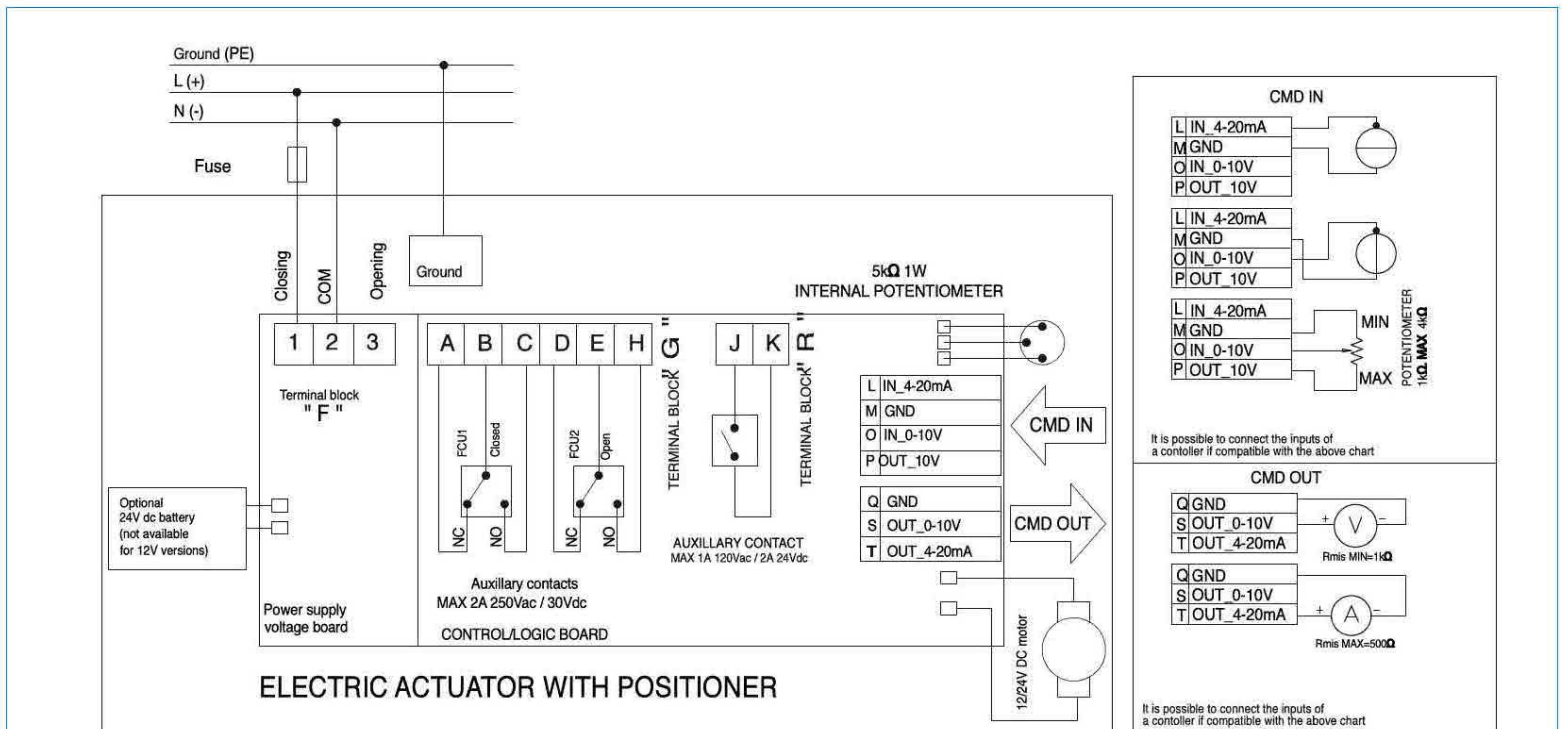
ON/OFF WIRING DIAGRAM - VB030 -VB190

12V AC/DC, 24V AC/DC & 100-240VAC



POSITIONER WIRING DIAGRAM - VB030 -VB190

12V AC/DC, 24V AC/DC & 100-240VAC



The power supply COM signal (pin "2" terminal block "F") cannot share the same electrical command ground signal (pin "GND" terminal block "CDM IN") or feedback ground signal (pin "GND" terminal block "CDM OUT").